

**News**

**reflex**

**2026**

# ORIZZONTE SUNBED

Design · *pininfarina*



ORIZZONTE SUNBED echoes the signature lines of the Orizzonte collection, drawing inspiration from the Ferrari Modulo. Unlike other elements in the collection, it is designed for outdoor use, combining a sporty, streamlined aesthetic with durability.

It also includes a protective cover, ensuring it remains shielded from the elements.

Sunbed with stained Okumé frame, equipped with wheels and a handle.

Adjustable backrest  
Upholstery: outdoor fabric or eco leather







# ORIZZONTE LETTO

Design · *pininfarina*



ORIZZONTE BED draws inspiration from the Orizzonte collection, with a language rooted in the pure lines of the Ferrari Modulo. Designed by Pininfarina, it maintains a sporty and strictly linear aesthetic, where form and tension come together. Like the sofa, it features a reclining backrest with adjustable inclination, allowing complete freedom in personal comfort.

Bed with internal wooden frame and polyurethane foam padding. Manual headboard adjustment mechanism.  
Bed frame in Canaletto walnut



# SATIN COMODINO

Design · R&C Reflex



SATIN COMODINO enters the Satin collection, redefining the night space through a refined interplay of satin bronze glass and bronze mirror. A balanced composition that bridges contemporary design and timeless interiors with understated elegance.

2-drawer nightstand with wooden frame.  
Bronze mirror top. Sides and drawer fronts in  
Satin brass (104M) & Bronze mirror



# SATIN PANCA

Design · R&C Reflex



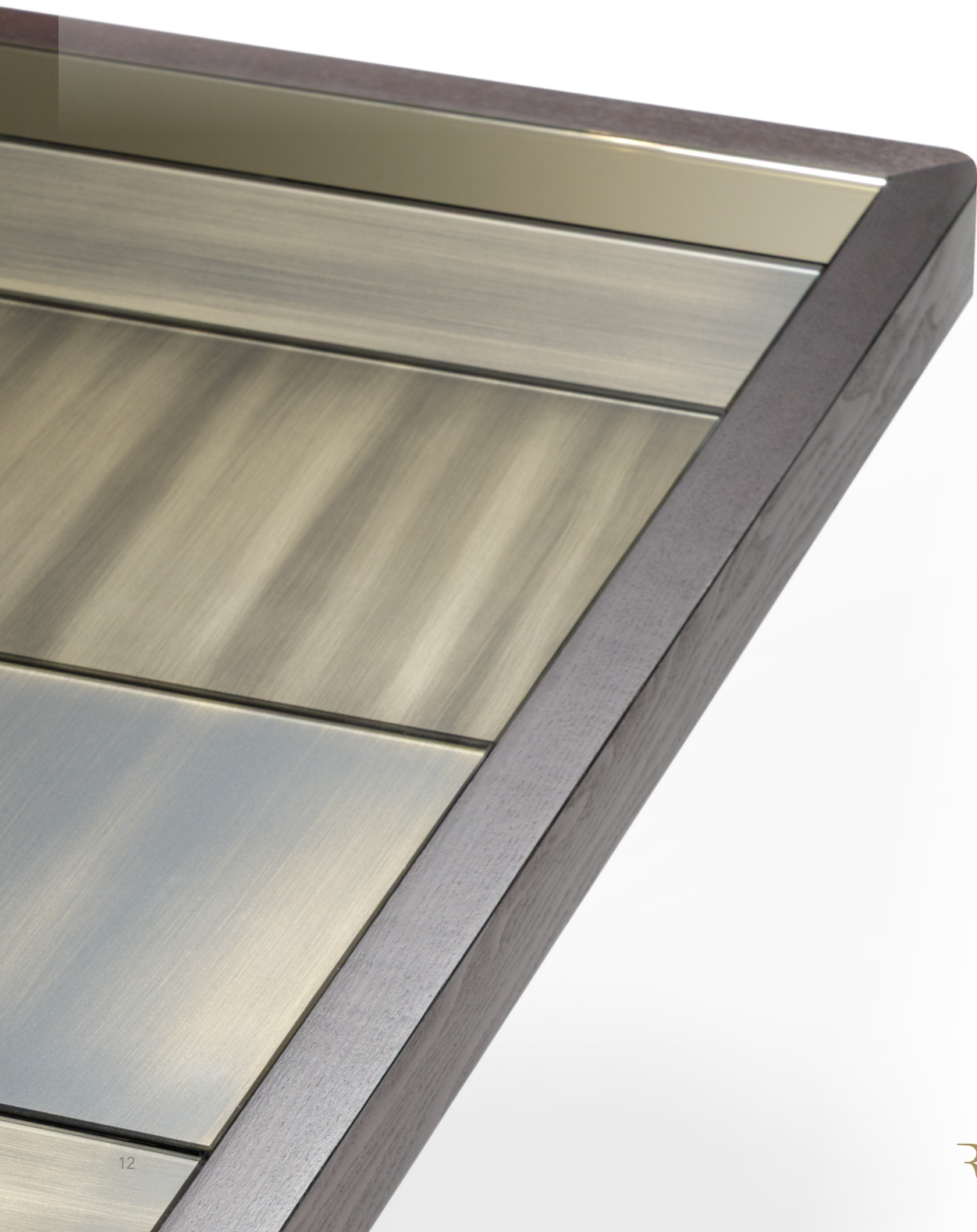
SATIN PANCA joins the Satin collection as a versatile piece, suitable for both living and sleeping areas. It can be customized with cushions, while preserving the signature composition of hand-painted bronze glass tiles and bronze mirror inserts.

Bench with wooden frame. Edges in Dark Ashwood, inner legs in Bronze (100M). Legs covered in bronze mirror glass and satin finish brass (104M).  
Configurations: Without cushion & with partial glass top and cushion upholstered in fabric or leather



# SATIN 40

Design · R&C Reflex



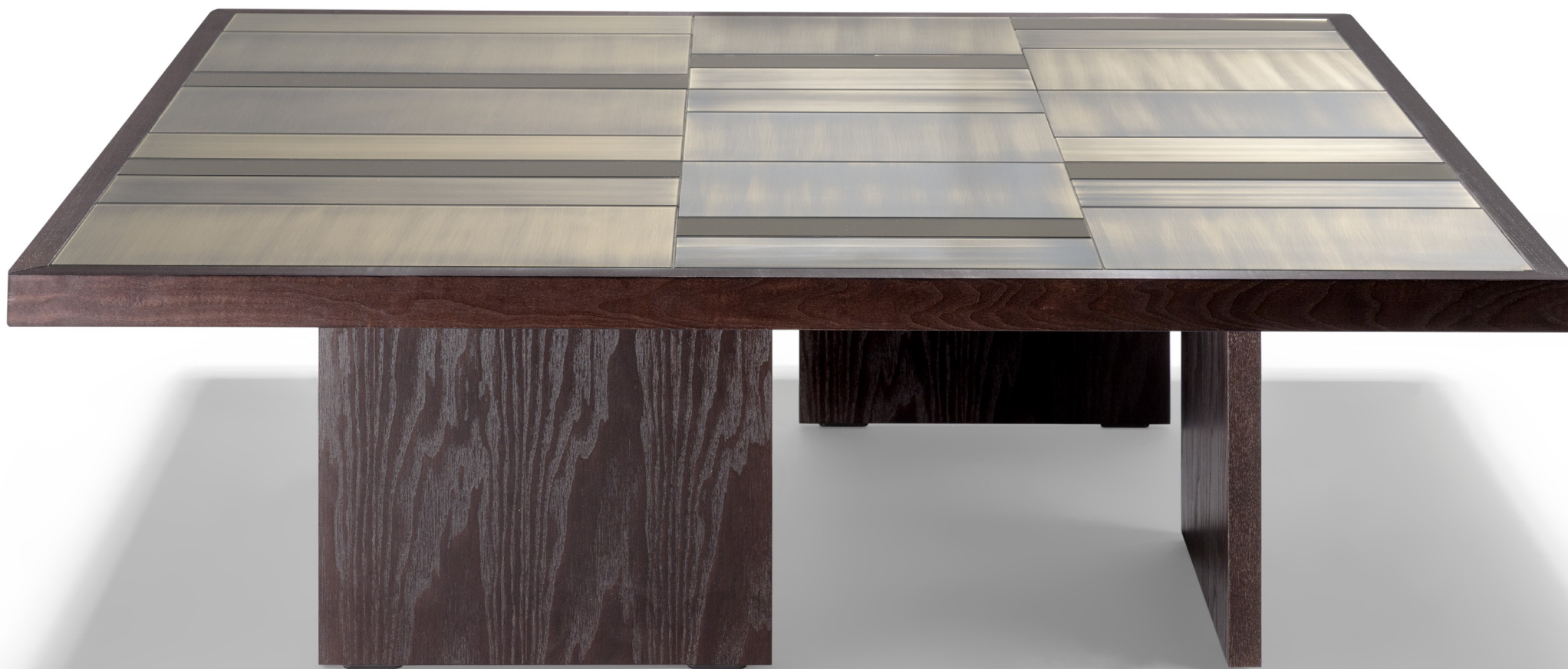
SATIN 40 continues the Satin Buffet collection with a refined, contemporary aesthetic. The top is composed of hand-painted glass tiles arranged side by side, in a composition enhanced by mirrored inserts that create a play of reflections and contrasts.

The piece is framed by a solid, dark ash structure, both essential and architectural.

Coffee table with wooden frame top covered in bronze mirror glass and satin finish brass (104M).

Legs and edges: Dark ash

Top: Bronze mirror glass and satin-finish Brass (104M)



# TAU COMODINO

Design · Tulczinsky



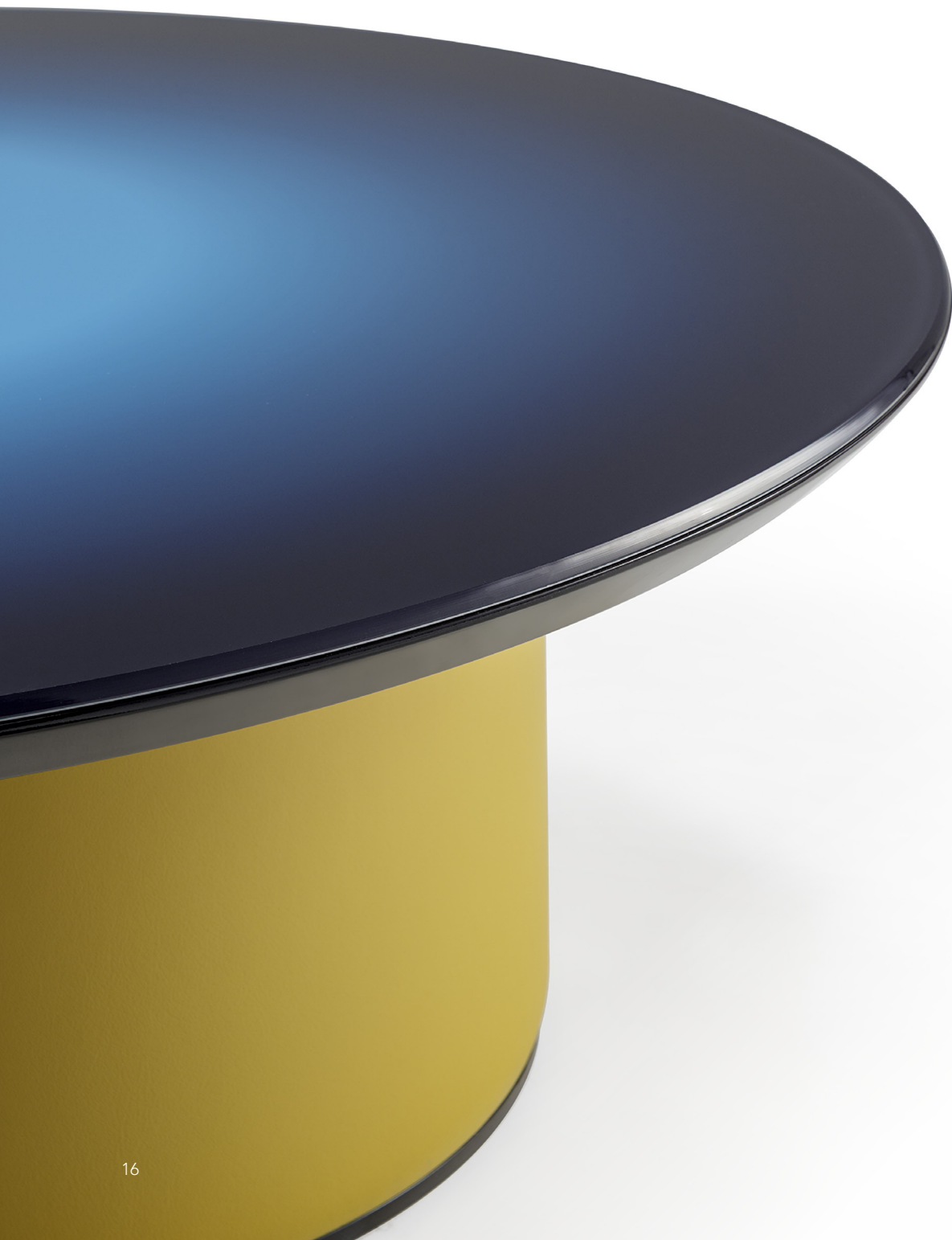
TAU BEDSIDE table features essential, clean lines that adapt effortlessly to any interior. Its wood and bronze details bring a refined simplicity, balancing minimal design with careful craftsmanship. A contrast of materials and tones creates a warm yet contemporary atmosphere.

Nightstand with cylindrical base and top with drawer.  
Base: Cylindrical, Bronze finish (100M)  
Top: Integrated drawer in dark ash & Bronze mirror cover



# HULA HOOP

Design · Tulczinsky

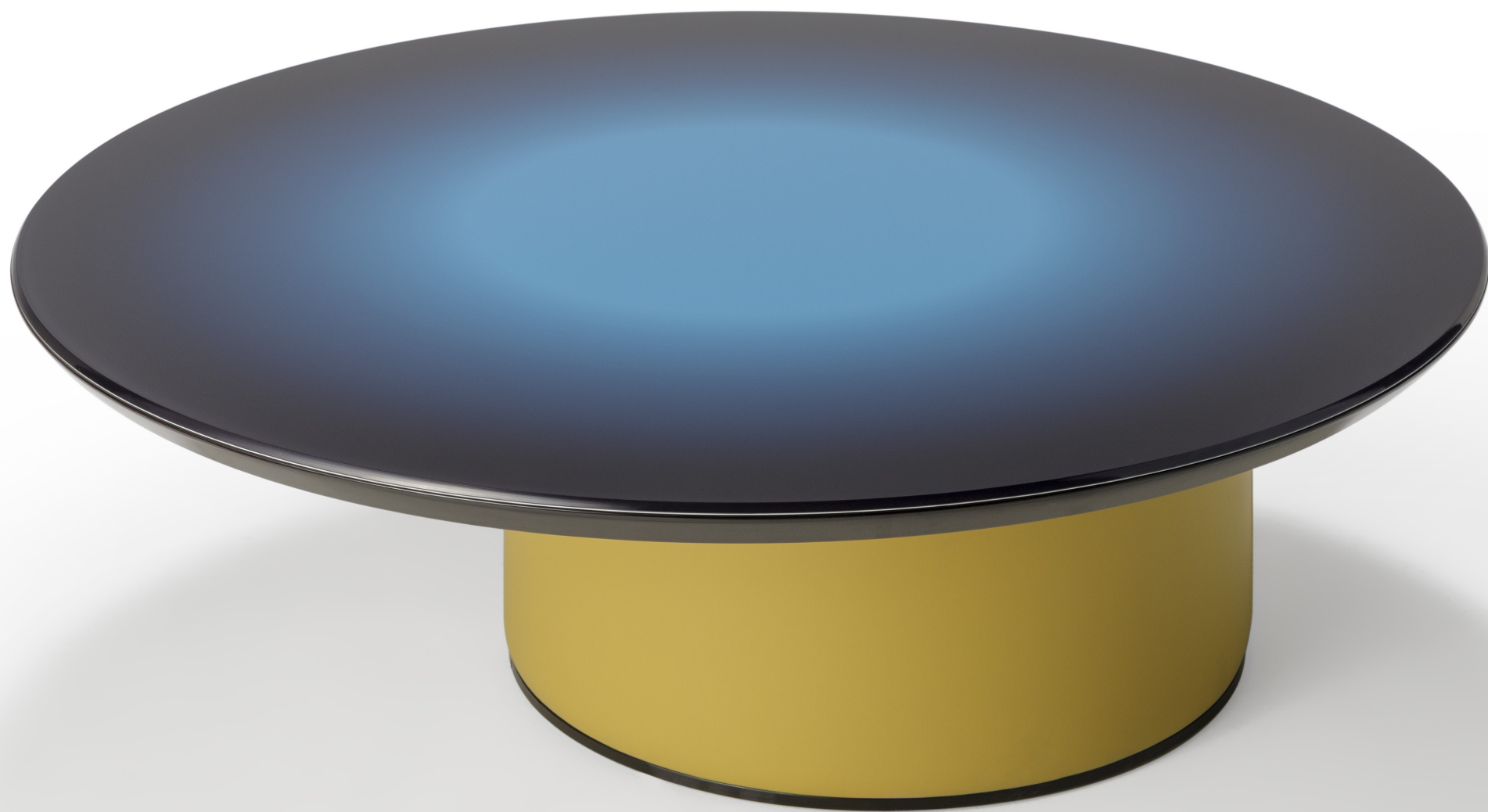


HULA HOOP table features a mechanism that allows horizontal movement in any direction, including circular motions, enabling the top to be freely repositioned and brought closer whenever needed. Its Aura Blue gradient top pairs with an ochre leather base, creating a playful and dynamic contrast. A design inspired by movement, echoing the light and joyful spirit of a hula hoop.

Coffee table with a cylinder base covered in leather and a circular motion mechanism.

Base: Leather Cat. C & Nabuk

Top: Beluga black lacquered wood with extra-clear glass cover and owl's beak edge in AURA Blue gradient print or AURA Green gradient print



# VIS A VIS

Design · Enzo Maria Serafini



*Enzo Maria Serafini*

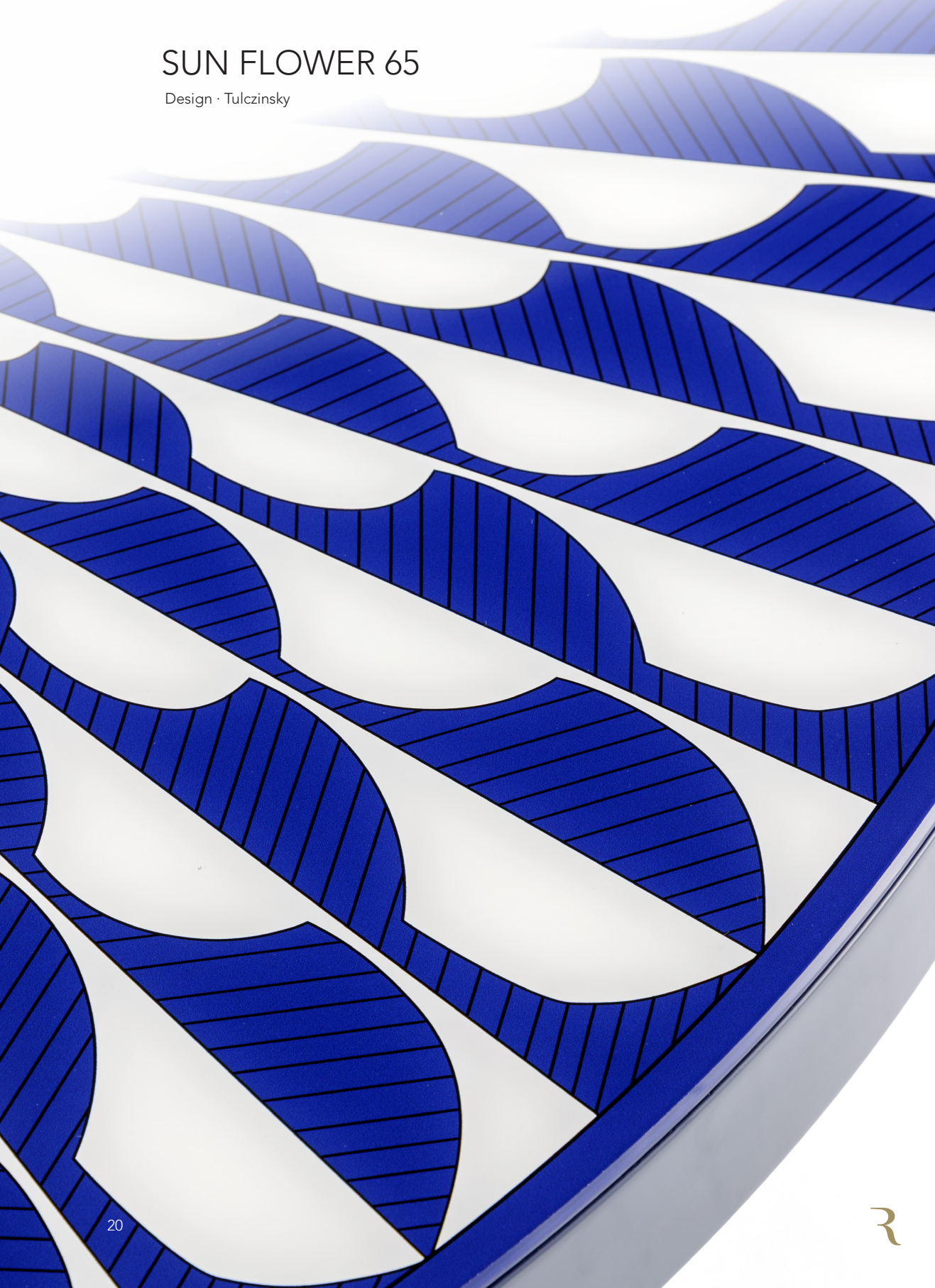
VIS A VIS is more than a coffee table: it is also a pouf designed to foster connection between people. Its configuration allows those seated on the sofa and on the pouf to face each other directly, creating an immediate sense of dialogue. The moving tray reshapes the pouf, generating dynamism and ever-changing forms.

Living room coffee table with extra-clear mirrored glass structure.  
Wooden top with upholstered cushion  
and integrated tray in Brass (104M) and mirror



# SUN FLOWER 65

Design · Tulczinsky



SUN FLOWER 65 is a coffee table inspired by Sicilian majolica tiles. Its decorative top creates a radial composition reminiscent of a blooming sunflower, adding rhythm and visual depth. The cylindrical base and essential forms enhance its sculptural and refined character. Available in different color variations, it brings a sophisticated balance of decorative art and contemporary design into the living space.

Lounge coffee table with wooden top and FLOWER Blue print cover, defined by a sculptural base and strong chromatic coherence between structure, edge, and surfaces.



3

# TAU 40 MURANO ROUND

Design · Tulczinsky



TAU 40 MURANO was originally designed as a square form and, in the 2026 version, is reinterpreted as a round piece to suit softer, more fluid interiors. The new circular top introduces a smoother and more harmonious language while also increasing the usable surface area. An evolution that combines formal refinement with enhanced functionality of the top surface.

Low table in blow colored glass with metal joint.o base







# ESSE CONSOLE BEVEL WOOD

Design · Tulczinsky



ESSE CONSOLE draws inspiration from the Esse collection, maintaining its soft, sinuous lines. It features a glass leg paired with a wooden top, adding material richness and warmth to the space. A balance between visual lightness and tactile presence, for an elegant and contemporary setting

Console with curved extra-clear glass or Bronze finish (100M) glass base. Shaped square-round bevel wood top or dark ash



# ORIGAMI SEDIA OFFICE

Design · Tulczinsky



ORIGAMI OFFICE CHAIR echoes the clean, sculptural lines of the collection, with geometric shapes and sharp cuts that evoke a folded sheet. Designed for desk use, it integrates functionality with a swivel base and wheels. A balance of aesthetics and practicality, bringing a refined touch to the contemporary workspace.

Chair with wooden structure, and padded seat and back.

Raised swivel base with 4 spokes.

Structure: wood, upholstered seat, upholstered backrest

Base: 4-star swivel in bronze (100M) or matt black



# DREAMCATCHER SPIRAL

Design · Annalù



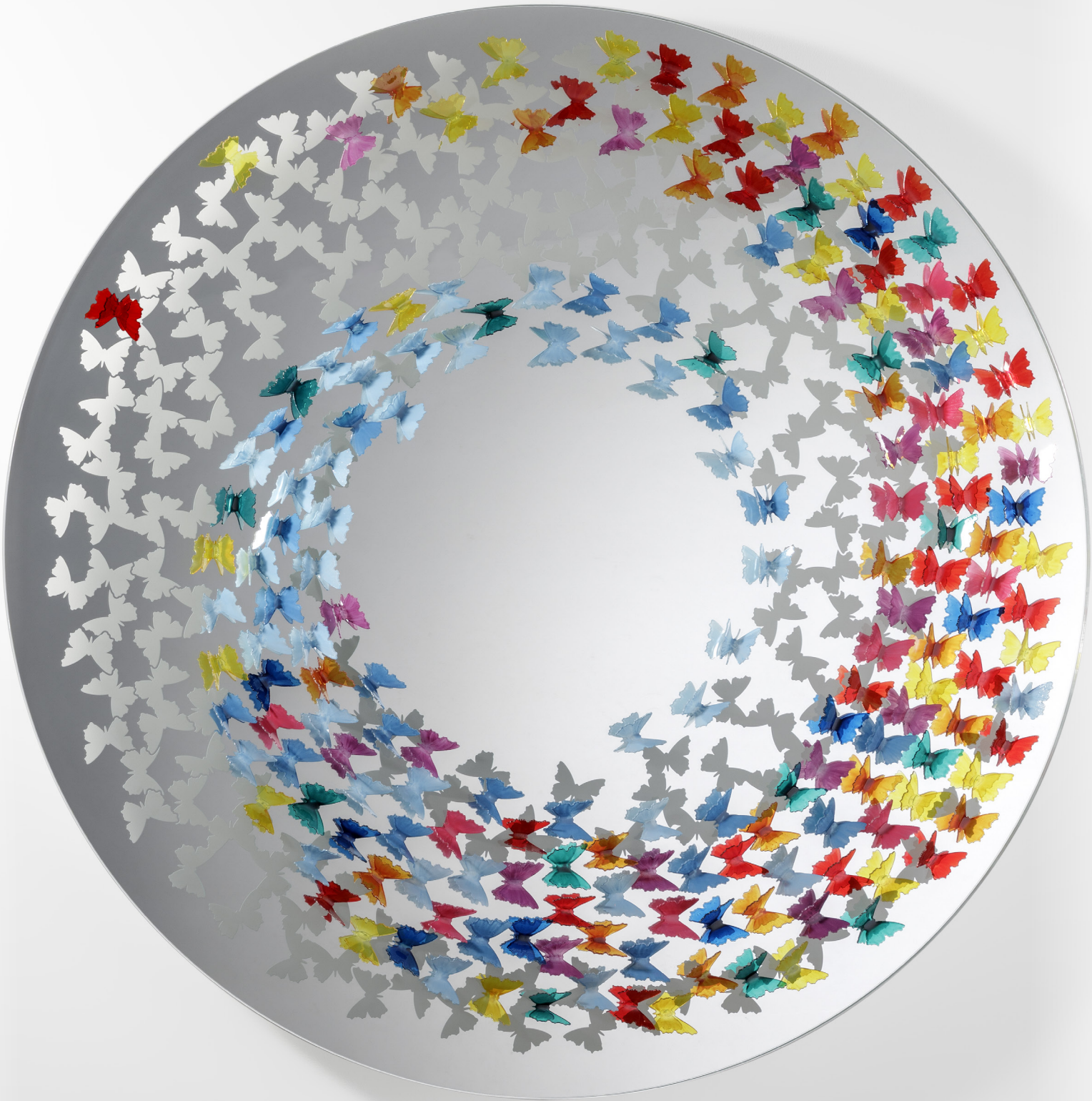
*Annalù*

DREAMCATCHER SPIRAL draws inspiration from the most iconic works of Annalù, exploring a refined duality between sandblasted, backlit butterflies and three-dimensional ones resting on the surface, crafted in hand-painted glass.

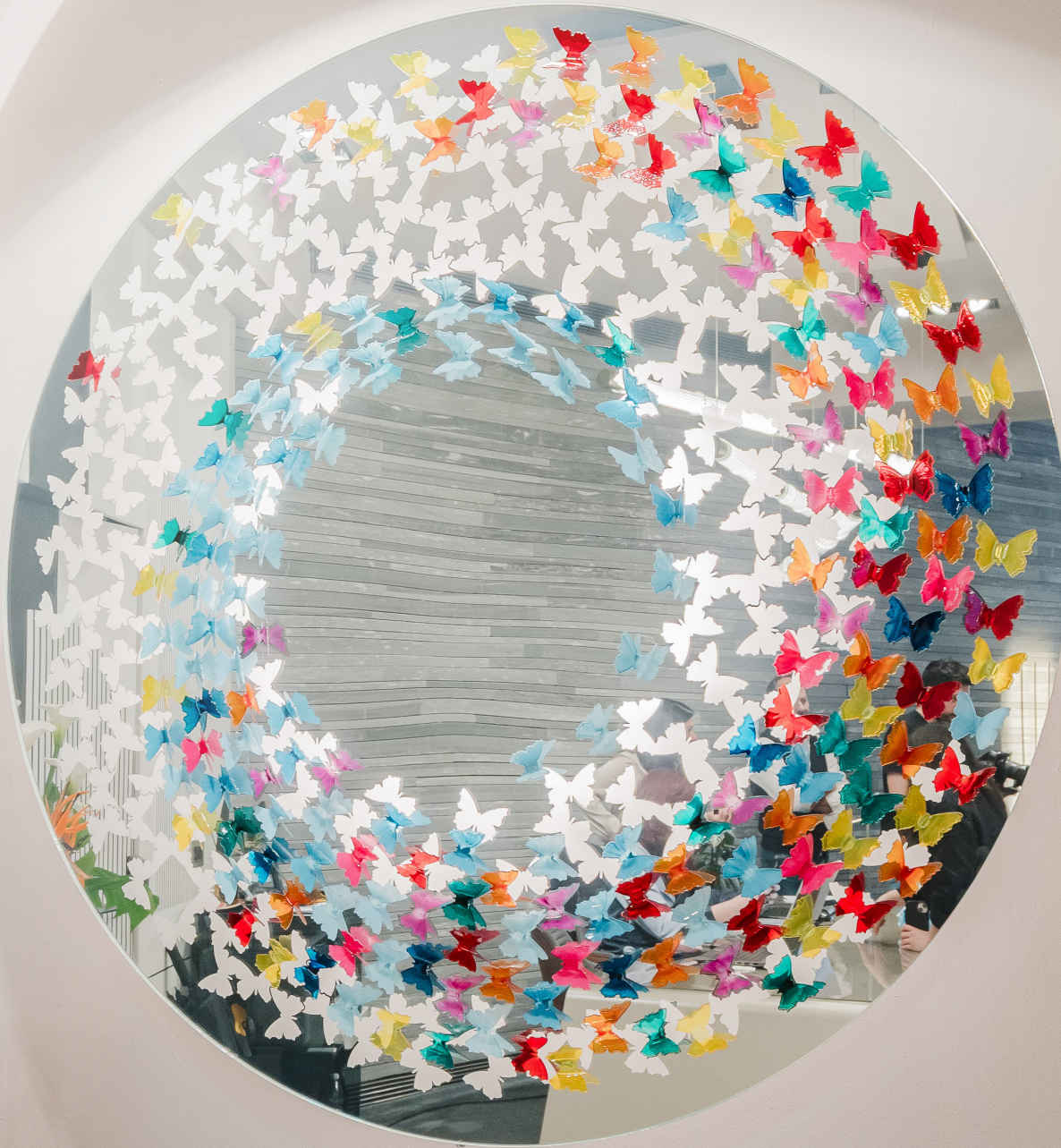
Mirror in glass with a decoration of hand-painted glass butterflies.

Structure: Extra-clear glass

Decoration: Painted glass butterflies arranged in a spiral  
Integrated LED







# ANGELS

Design · Tulczinsky



ANGELS is a statement chandelier defined by a sense of suspended lightness, with wing-like forms evoking celestial movement. Handcrafted in transparent glass, it combines sculptural presence with an ethereal, contemporary aesthetic.

Lamp with mirror glass support and glass pendant.

Structure: Mirror glass support  
handcrafted transparent cast glass pendants

Lighting: LED recessed in the support

Equipment: Cable cover frame included



# EDEN LAMPADARIO

Design · Tulczinsky



*EDEN is a sculptural chandelier in Murano glass, where hand-crafted birds and leaves form a poetic luminous composition. Light filters through the shapes, creating soft reflections and an ever-changing atmosphere. Adjustable in height, it can descend close to the table, becoming an immersive experience to admire up close.*

Chandelier with mirrored glass support and decorative Murano glass pendants in the shape of leaves, hummingbirds, and parrots  
Lighting: Recessed LED  
Equipment: Cable cover frame included



3





# LANTERNA PIANTANA TOTEM

Design · Tulczinsky



*LANTERNA PIANTANA TOTEM translates the Lanterna collection into a versatile floor-standing piece, designed to inhabit a range of interiors. Its glass form diffuses light in a soft, radial glow, turning illumination into a gentle and atmospheric presence.*

Floor lamp in artistic glass with internal glass diffuser  
Structure: Transparent artistic glass or straw-colored artistic glass  
Glass with Rugiada finish  
Base & Lid: Polished chrome metal  
Integrated LED



3

WALLY

Design · Riccardo Lucatello



WALLY is a wall modular system designed for integrating boiserie in a variety of materials, configurable according to spatial and compositional needs. The system is based on a grid of uprights and crossbars that defines rhythm, proportions, and extensive customization possibilities, allowing flexible compositions tailored to different architectural contexts and interior applications.

Boiserie materials: wood panels, glass panels, upholstered panels. Functional options: integrated TV modules, shelving systems, rack uprights, and optional LED backlighting for Marmoreflex and Legnoreflex panels.



# reflex

## HEADQUARTER

Via Paris Bordone, 78/80

31056 Biadene di Montebelluna

Treviso – Italy

(+39) 0422 844440 - Italia

(+39) 0422 844430 – Estero

[www.reflexangelo.com](http://www.reflexangelo.com)

[info@reflexangelo.com](mailto:info@reflexangelo.com)

## SHOWROOM BIANCADE

Via Gabriele D'Annunzio, 77

31056 Biadene di Montebelluna

Treviso – Italy

(+39) 0422 849201

## SHOWROOM MILANO

Via Madonnina, 17

20121 Brera

Milano – Italy

(+39) 02 80582955

[space@reflexangelo.com](mailto:space@reflexangelo.com)

## SHOWROOM BERLINO

Taubenstrasse, 26

D-10117 Berlino

Germania

(+49) (0)30 20 888 705

[berlin@reflexangelo.com](mailto:berlin@reflexangelo.com)

Nessuna parte di questo documento, testo o fotografia può essere riprodotta o trasmessa in qualsiasi forma o tramite mezzo elettronico o meccanico, comprese le fotocopie, senza previo permesso scritto da parte della società REFLEX SPA.

No part of this document, text or photo may be reproduced or transmitted in any shape or form, through electronic or paper-based communication, including photocopies, without the prior express written consent of REFLEX SPA.

I colori dei legni, delle laccature, dei tessuti e delle pelli presenti in questo catalogo sono suscettibili dei procedimenti di stampa. Fa fede il campionario dell'azienda. REFLEX SPA si riserva la facoltà di modificare in qualunque momento e senza preavviso le caratteristiche tecniche (misure, finiture, tessuti e pelli) dei suoi prodotti.

Wood, lacquer, fabric and leather colours are not binding and may vary due to printing. Please refer to the company sets of samples. REFLEX SPA reserves the right to modify the technical specifications of the products (sizes, finishes, leather and fabrics) featured in this catalogue at any time and without prior notice.